

Blast Chillers

BCF-65

Compact Blast Chiller/Freezer

BCF-24

Compact Blast Chiller/Freezer

Blast Chiller/Freezers quickly chill or freeze large quantities of hot food to safe cold temperatures quickly and efficiently for later storage, serving or rethermalization.

Description

Henny Penny compact blast chiller/freezers are designed to improve efficiency and food safety in smaller foodservice operations. Both feature enclosed, air-cooled condensers and removable, adjustable shelving that accepts standard steam table pans and grids.

Configuration

BCF-24

- Chills up to 24 lbs. (11 kg) per cycle of food properly portioned in pans or other containers.
- Shipped with (3) pairs of runners for adjustable shelving.

BCF-65

- Chills up to 65 lbs. (30 kg.) per cycle of food properly portioned in pans or other containers.
- Shipped with (6) pairs of runners for adjustable shelving.

Additional runners available.

Both models available with right or left hinged door.

Main Features

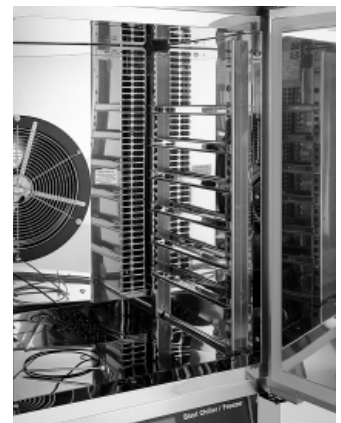
- Blast chill to 40°F (4°C) or blast freeze to 0°F (-18°C).
- Removable, adjustable shelf runners accept full-size steam table pans and grids.



Above: BCF-24 with left-hinged door
Right: BCF-65 with left-hinged door

MW
MACHINERY WORLD

- Touch pad controls with simple icons and large digital display.
- Temperature display in °F or °C.
- Units can be controlled by timer or by internal food temperature using multi-point Frigiprobe.
- Automatic holding mode at end of cycle.
- Self-contained evaporation-no drain or attachments needed.
- Deicing feature rapidly removes ice from evaporator.
- Self-diagnostic system identifies service requirements.
- R404A refrigerant, CFC free.
- Self-closing door with magnetic seal remains open past 90° for convenient loading and unloading.
- Stainless steel cabinet with polyurethane foam injected insulation.
- Designed with coved corners, round door gasket and removable shelf runners and supports for easy cleaning.
- Adjustable leveling legs.



Cabinet interior of BCF-65 shows removable, adjustable shelf runners.

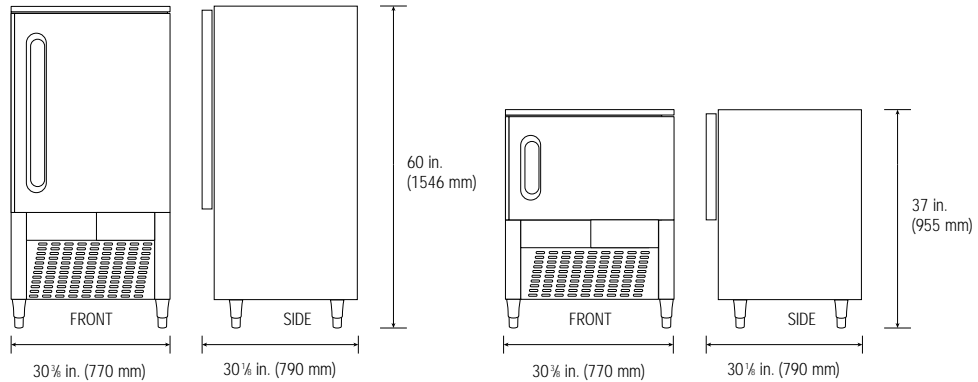
Henny Penny Corporation
P.O. Box 60
Eaton, OH 45320

+1 937 456.8400
+1 937 456.8402 Fax

Toll free in USA
800 417.8417
800 417.8402 Fax

www.hennypenny.com

BCF-65 BCF-24 Specifications



Dimensions

Clearances

Top: 16 in. (400 mm)
Sides: 4 in. (100 mm)

Top: 16 in. (400 mm)
Sides: 4 in. (100 mm)

Standard Pan Capacity

(6) Full-size steam table pans, 2½ in. (65 mm).

(3) Full-size steam table pans, 2½ in. (65 mm).

Adjustable Shelving

(10) Shelf runner locations on 1¾ in. (35 mm) centers.

(5) Shelf runner locations on 1¾ in. (35 mm) centers.

Product Capacity

Blast chilling: 65 lbs. (30 kg)
Blast freezing: 32 lbs. (15 kg)

Blast chilling: 24 lbs. (11 kg)
Blast freezing: 16 lbs. (7 kg)

Condensing Unit

Air cooled, 1.5 hp

Air cooled, .75 hp

Refrigerant Type

R404A

R404A

Shipping Weight

392 lbs. (178 kg)

315 lbs. (143 kg)

Listings

UL, UL Sanitation, CUL, CE

UL, UL Sanitation, CUL, CE

Electrical

Model	Voltage	Phase	Cycle/Hz	KW	Amp
BCF-65	200	1	50	2.5	12.0
	208	1	60	2.9	7.0
	230	1	50	3.0	13.0
BCF-24	200	1	50	1.8	11.0
	208-240	1	60	2.3	4.3
	230	1	50	1.8	9.0

Specifications subject to change without notice

Order from:

Henny Penny Corporation
P.O. Box 60
Eaton, OH 45320