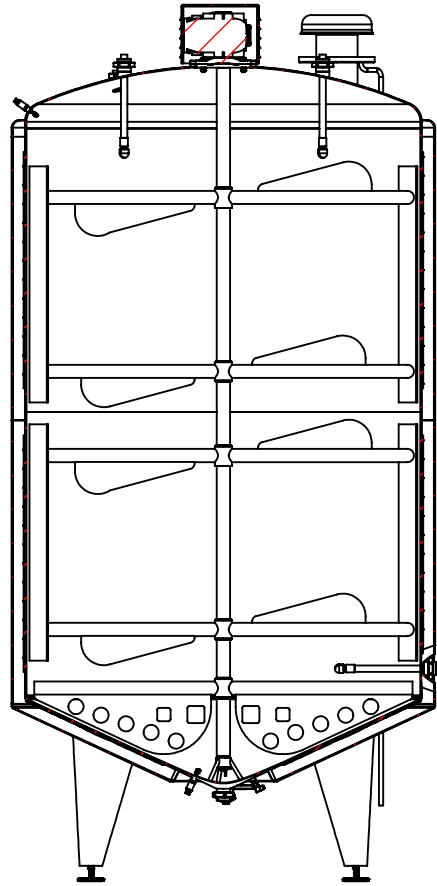


NOZZLE INFORMATION TABLE				
NO	DESCRIPTION	SIZE	STANDART	POSITION
1	ROUND MANHOLE COVER	Ø400	ELICA	0° TOP
2	AIR VENT	Ø219,1	CUSTOM DESIGN	225° TOP
3	AGITATOR 22 R.P.M	5,5 KW	SEW REDUCER	0° TOP CENTER
4	LABEL	100*200	CUSTOM DESIGN	0° SHELL
5	PRODUCT INLET DIN65	Ø70	UNION	135° TOP
6	ROTARY CIP BALL	---	ALFA LAVAL BRAND	90°-270° TOP
7	HIGH LEVEL SENSOR	---	IFM BRAND	90° TOP
8	ROTARY CIP BALL	---	ALFA LAVAL BRAND	270° SHELL
9	LOW LEVEL SENSOR	---	IFM BRAND	90° BOTTOM
10	PT100 SENSOR	---	IFM BRAND	180° BOTTOM
11	PRODUCT OUTLET DIN65	Ø70	UNION	0° BOTTOM CENTER
12	JACKET INLET / OUTLET	Ø48,3	FLANGE	180°
13	ADJUSTABLE LEG	+/-100	FLANGE	---
14	PRESSURE TRANSMITTER	---	IFM BRAND	270° BOTTOM

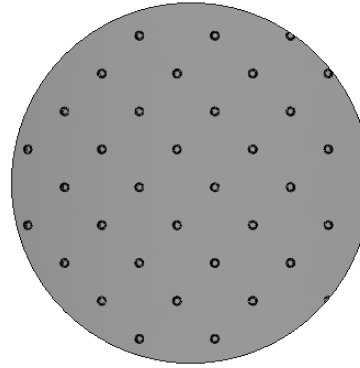
PROJECT NAME	10.000 LT CREAM PROSES TANK	EMPLOYER	---
MATERIAL	AISI-304L Cr/Ni 2B - 4N FINISH CERTIFICATE	QUANTITY	1
DESIGNER	Mech. Eng. Oğuz AKGÜL	PROJECT NO	PD-015-2021
CHECK	---		
APPROVAL	---		
DATE	18.02.2021		

THE MIXER IS CUSTOM DESIGN ANCHOR TYPE



KESIT F-F
ÖLÇEK 1 : 40

THE JACKET IS DIMPLE PLATE TYPE



DETAY H
ÖLÇEK 1 : 10



PROJECT NAME	10.000 LT CREAM PROSES TANK	EMPLOYER	---
MATERIAL	AISI-304L Cr/Ni 2B - 4N FINISH CERTIFICATE	QUANTITY	1
DESIGNER	Mech. Eng. Oğuz AKGÜL	PROJECT NO	PD-015-2021
CHECK	---		
APPROVAL	---		
DATE	18.02.2021		