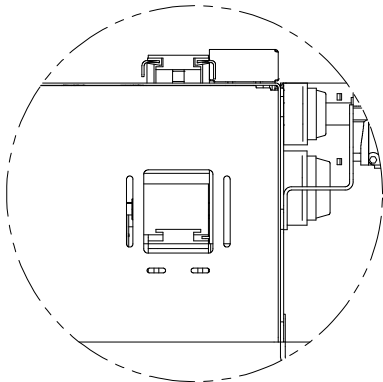
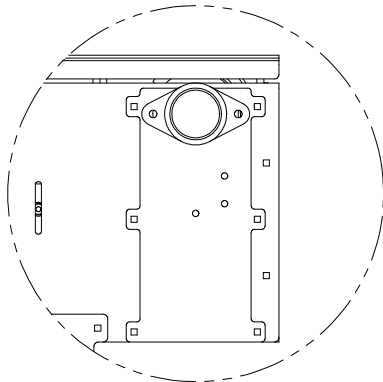


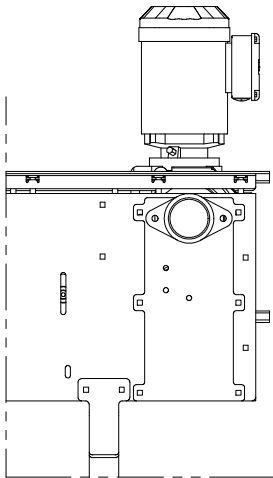
MACHINE PITCH (in [mm])	15 [381]
BASE MACHINE #LAYERS	4
PRODUCT CLEARANCE HEIGHT (in [mm])	11.06 [280.9]
ACCUMULATION (ft [m])	181 [55]
EXTENSION #LAYERS	2
ACCUM WITH EXTENSION (ft [m])	278 [85]



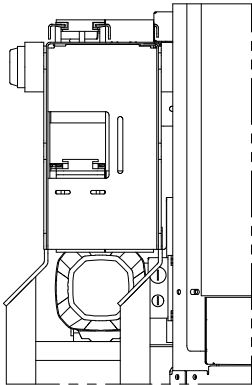
VIEW C-C
SCALE: 5:1



VIEW D-D
SCALE: 5:1

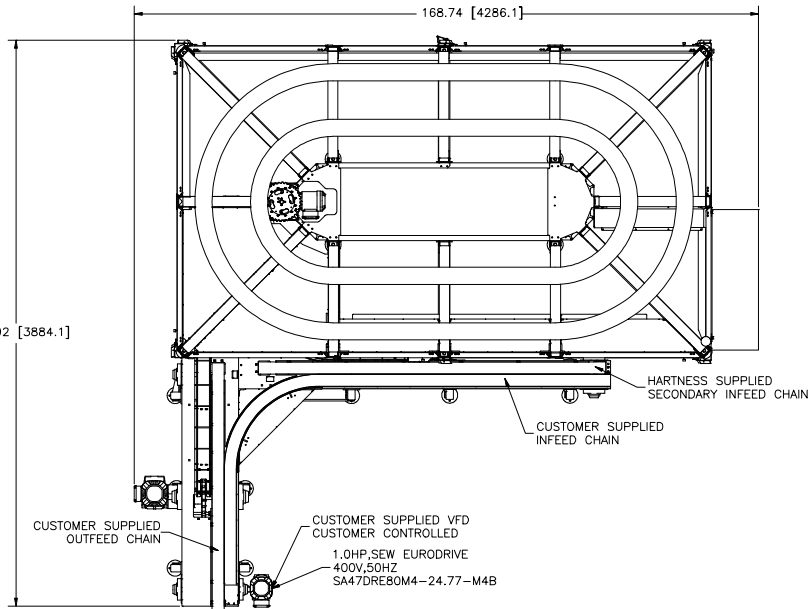


VIEW B-B
SCALE: 4:1



VIEW A-A
SCALE: 4:1

152.92 [3884.1]



156.72 [3980.6]
INSTALLED HEIGHT

94.13 [2390.8]
SHIPPING HEIGHT

46.00 [1168.4] ±2.50 [63.5]
INFEED/OUTFEED ELEVATION

HI SUPPLIED VFD
HI CONTROLLED
1.0HP,SEW EURODRIVE
400V,50HZ
SA47DRE80M4-24.77-M4B

REV	REVISION DESCRIPTION	ECO NO.	DATE	BY	CHK

UNSPECIFIED TOLERANCES	FABRICATION
MACHINING	SHEET METAL
.0	.055 [1.40]
.00	.010 [0.25]
.000	.005 [0.13]
FRACTIONAL 1/32	WELDED FEATURES 1/16 [1.6]
ANGULAR 1/2	ANGULAR 1/2
ALL DIMENSIONS IN INCHES (mm)	
√ 125 (UNLESS OTHERWISE NOTED)	
DEBUR AND REMOVE ALL SHARP EDGES	

THIS DOCUMENT IS THE PROPERTY OF, AND CONTAINS PROPRIETARY INFORMATION OWNED BY HARTNESS INTERNATIONAL, INC. AND/OR ITS SUBCONTRACTORS AND SUPPLIERS. IT IS TRANSMITTED TO YOU IN CONFIDENCE AND TRUST, AND IS TO BE RETURNED UPON REQUEST. NO PERMISSION IS GRANTED TO PUBLISH, USE, REPRODUCE, TRANSMIT OR DISCLOSE TO ANOTHER ANY INFORMATION CONTAINED IN THIS DOCUMENT, IN WHOLE OR IN PART, WITHOUT THE PRIOR WRITTEN PERMISSION OF AN AUTHORIZED EMPLOYEE OF HARTNESS INTERNATIONAL.



NETWORK NODE:	CAD FILENAME:
SCALE: NONE	DRAWING STATUS: CURRENT
DATE: 7/3/2013	REPLACED BY:
W/O #:	TITLE
ECO NO#:	DAIRY CREST LTD., SURREY, UK
DWN. BY: BC00PER	SURFACE ROUGHNESS
CHK. BY:	SURFACE TREATMENT

REVISION:	LOCATION:	SHEET NO#:
	CA	1 OF 1

MATERIAL	ORIENTATION	DRAWING NO.

W643153SE