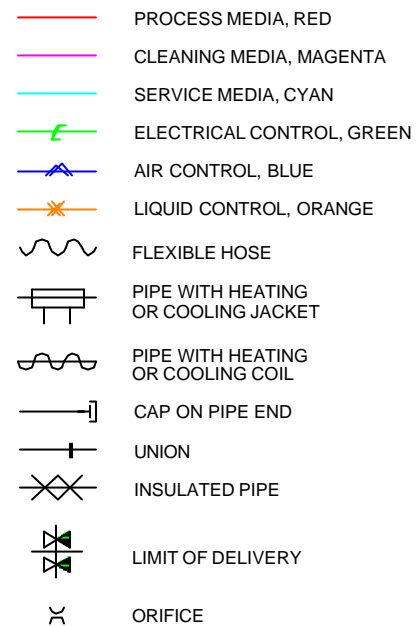


# FLOW DIAGRAM SYMBOLS

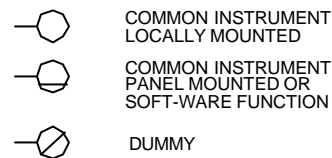
## PIPING SYMBOLS



## DENOMINATION

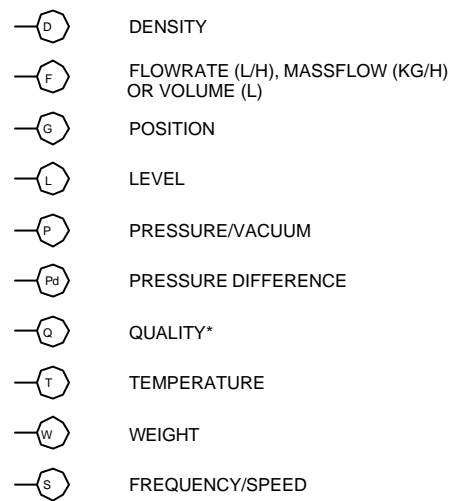
A	AIR
IA	INSTRUMENT AIR
SA	SANITARY AIR
C	CONDENSATE
D	DRAIN
S	STEAM
W	WATER
CW	COOLING WATER
HW	HOT WATER
IW	ICE WATER
SW	SOFTENED WATER
TW	TOWER WATER
GW	GLYCOL WATER
G	GAS
--R	RETURN
--C	CIRCULATION
CIP PR	CLEANING PRESSURE LINE
CIP R	CLEANING RETURN LINE

## INSTRUMENTS



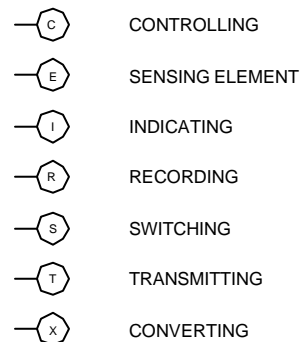
FIRST LETTER

Measured or initiation variable



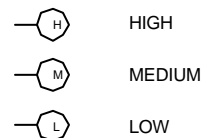
## SECOND LETTER

### Display of output function

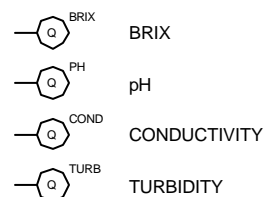


THIRD LETTER

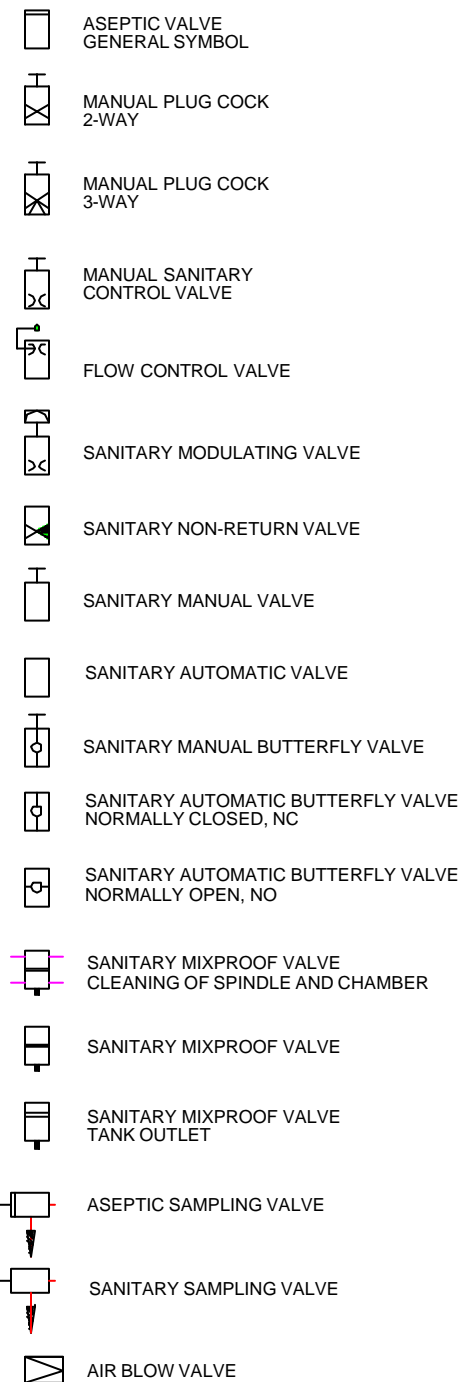
Qualifying letter



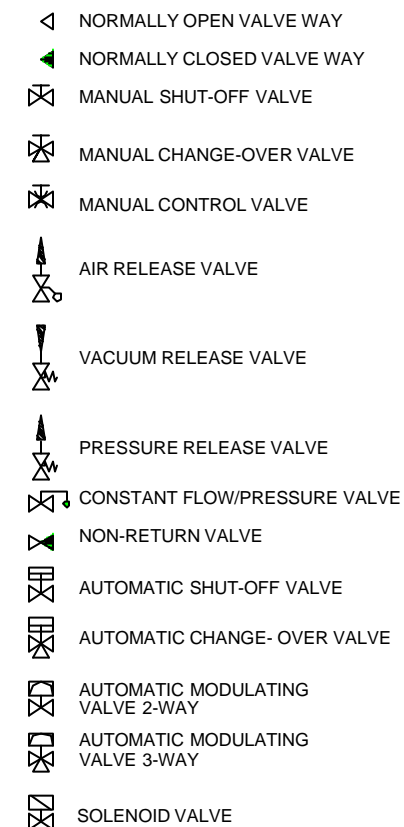
## \*TYPE OF QUALITY



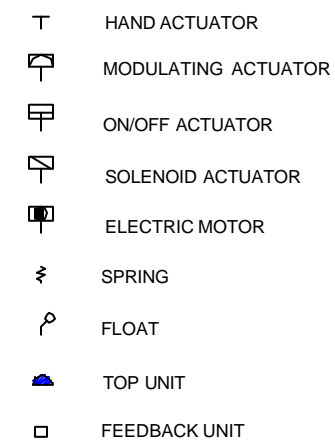
## HYGIENIC VALVES



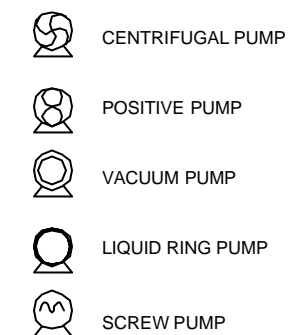
## NON-HYGIENIC VALVES



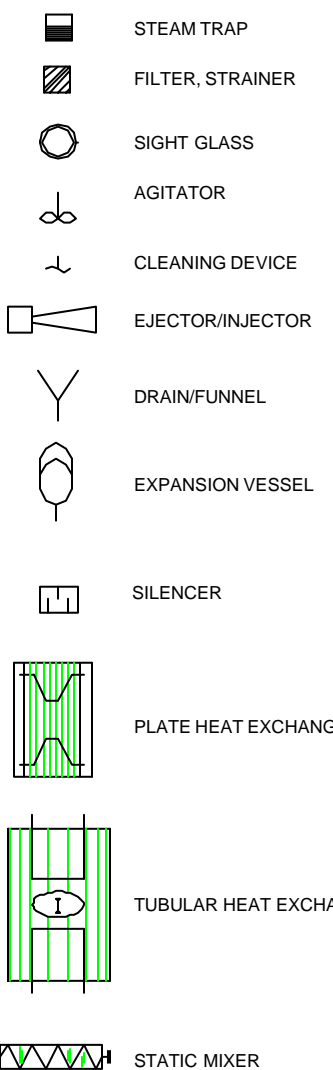
## ACTUATOR FUNCTIONS




## PUMPS

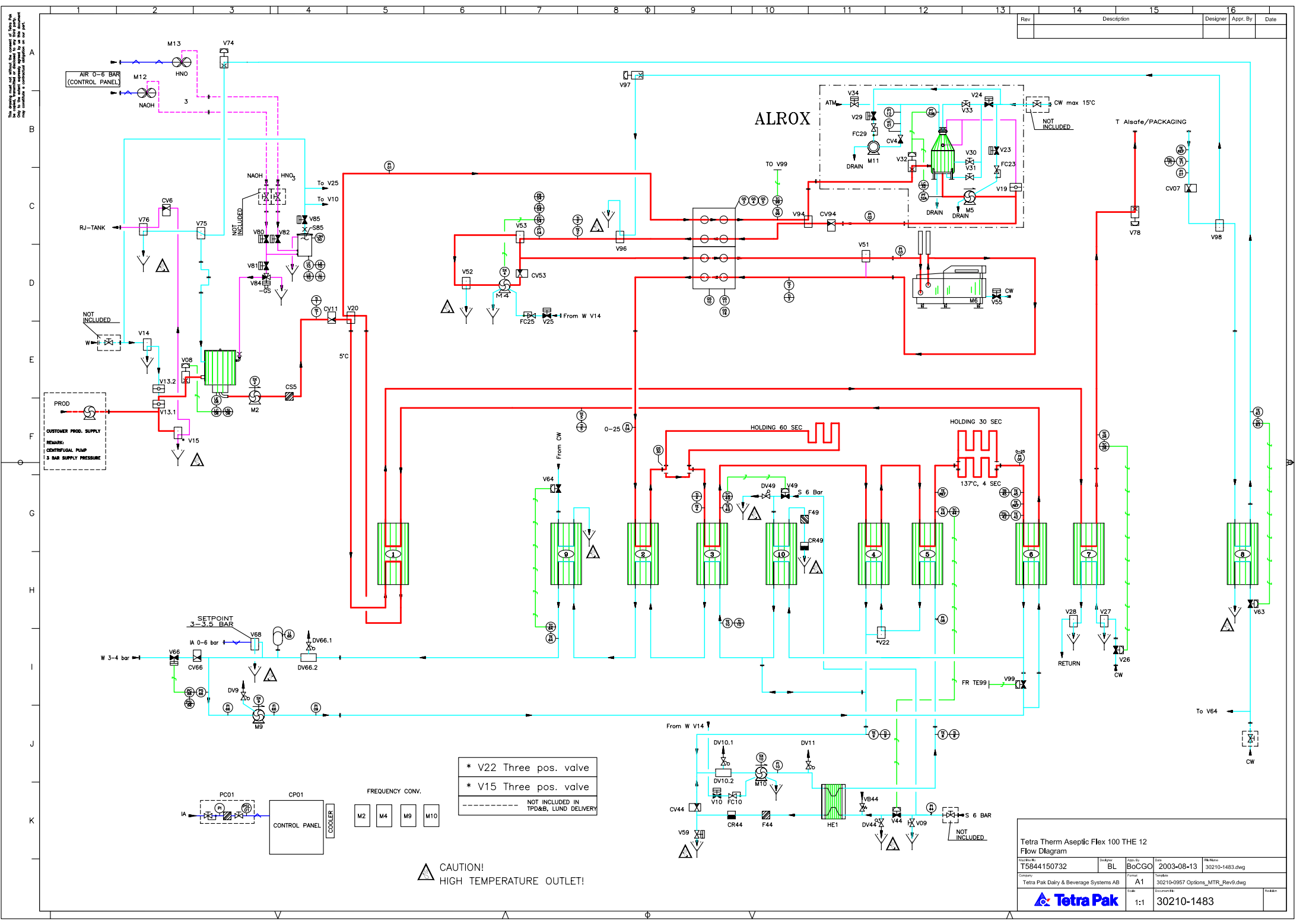


## COMPONENTS



## Flow Diagram Symbols

Machine No	Designer MBN	Appr. By	Date 2001-10-04	File Name
Company	Formst A2	Template		
		Scale	Document No Doc No 1213349-01	Revision



Not to be used for other than the intended purpose. The user is responsible for the correct use of the equipment. The user is responsible for the correct use of the equipment. The user is responsible for the correct use of the equipment.

Rev	Description	Designer	Appr. By	Date

- \* V22 Three pos. valve
- \* V15 Three pos. valve
- NOT INCLUDED IN TPD&B, LUND DELIVERY

CAUTION!  
HIGH TEMPERATURE OUTLET!

Tetra Therm Aseptic Flex 100 THE 12 Flow Diagram				
Project No.	TS5844150732	Drawn by	BoCGO	File Name
Company	Tetra Pak Dairy & Beverage Systems AB	Scale	A1	30210-1483.dwg
Document	30210-0957 Options_MTR_Rev9.dwg	Sheet	1:1	30210-1483