

Type: 317MC30-3TPS Customer: FRYA
 Serial-No: 90L33489 Address :
 Order-No: M53965 /8901862 Country : Group:
 Direct: Agent : LANDTEKNIKK
 Weight: 4100 kg SO-No:1624 Fitter : LUBKE SIC-No: 2026

MOTOR SPECIFICATION:

Mot-Art.No.: CUST.MOT. Ambient: 40 deg.C Speed : 1485 1/min
 Manufacture: Phase : 3 Test : 1480 1/min
 Motor-Type : 280M Cycle : 50 Hz d x lg: 75 x 140
 Frame : B3 Volts : 400 Prot-System.: IP 54
 Power : 90,0 kW Ampers : 0,0A Test:152,4 A Mot-No:

Belt-Drive: 12000 1/h Type: TAPER LOCK
 Driving-No:T52226 Groove:SPB TL-Bushing:§5202084 Bore: kwy: 20DIN
 Driven-No.:T52210 Groove:SPB TL-Bushing:T52042 Bore:3" kwy: DIN
 Belts-No. :T02398 Quant : 5 Type:SPB 2900 Centers: 810

Safe.Valve:N.O. set to: 0 bar Splash-Cov: --- Support:---
 PR.-Gauge :T18031 set to: 200 bar Manufacture:
 Inl.-Gauge: T18081
 Gauge-Block: T24708 Homo-Valve: 2-3/16" MICRO GAP - 3 STG
 P1--Pkg:T19023 d=2-1/4" 1st Stg: BACKPR. VALVE 2-3/8" PILOTED
 2nd Stg:

Capacity:12000 1/h = 3170 USph
 Test-Cap:11885 1/h Pressure: 200 bar Oil-Temp:38 deg.C Pressure: 3,0 bar
 Noise: 85,1 db(A)
 Pressure: 200 bar = 2900 PSI Suct.-Connection: DN 65 DIN 11851
 Product: MILK Dish.-Connection: DN 50 DIN 11851
 Temperature: 80 deg.C High.Pr:-Connect: ---

STANDARD-ASSY.-LIST: SPECIALS:

Base :T90471-89 EXC.OIL SPLASH COVER T30652,MACHINE FEET T04308
 (i= 5,350)
 Oil-Lines :T97360A89
 L.O.P. :T98206-89
 Water-Lines:T97376-88
 Skin :T97050D88
 Well-Lines :753702
 CYL.-Block :T91637A88
 Material :1.4405
 Assy-Dwg. :87035-1
 Tools :T96640-88
 Homo-Valve :905988A88 EXC.: INLET FLANGE WITH PR. SENSOR CONN. REF T21529
 Material :1.4301 BACK PR. VALVE T97998-88
 Assy-Dwg. :87034-2 BACK PR. VALVE "C" 88426-3
 HVA-Lines :T97209 LESS: START- STOP-SWITCH + CONTROLL LAMP
 PR. SENSOR SYSTEM G02625(FAX 101), -ADJ. SCREW T17618,
 Rec.-System:--- LESS DISPLAY G02619
 Lubr.-Oil :T89501 Manual: T88802+
 Outline-Dwg:89489-1 Wiring-Dia: 88199-3, 90071-3
 REMARKS : AUT. PR. CONTROLLER T98601-88 EXC.: DOUBLE PUMP T98906,
 -MOTOR T001269, HYD. DIAGRAM 85277-4A,

AGI: 1 Date:14.06.90 AGUS: 1 Date:14.06.90 UK: 0 Date: 0 File: 1
 Erf-Date: 8.06.90

TYPE : 3170 MC 30- 3 TPS CUSTOMER: Frya
 SERIAL NO.: 90L 33 489 ADDRESS :
 ORDER NO.: M53965 / 8901862 COUNTRY :
 DIRECT : AGENT: Landtechnik
 S. O. NO.: 1624 FITTER: Lübecke
 S. I. C. NO.: 2026 WEIGHT: 4.100 kg

MOTOR SPECS: Cust. Motor NO.: AMBIENT: (40°C) SPEED: (1485 min⁻¹)
 MANUFACTURER: PHASE: (3) TEST :
 TYPE: (280 M) CYCLE: (50Hz) ØxLg: (Ø75x140)
 FRAME: (B3) VOLTS: (400V) PROTECT SYST: (1754)
 H. P. : /KW: (90) AMPS: (173) TEST: 152,4 MOTOR NO.: /

BELT DRIVE: 12.000 l/h SUPPLIER: TYPE: TAPER LOCK
 DRIVING: T52226 R.D. 315 GROOVE: SPB BORE: 95mm K.WY: 20 DIN6885
 T. L. BUSHING: T52020
 DRIVEN: T52210 R.D.: 500 GROOVE: SPB BORE: 3" K.WY: less
 T. L. BUSHING: T52042
 BELTS-NO.: T 02398 QU.: 5 TYPE: SPB 2900 CENTERS:

SF-VALVE not ordered set to bar SPLASH-COVER SUPPORT:
 PROD. GAUGE T18031 set to 200 bar SERIAL NO. INLET GAUGE: T18084 ✓
 GAUGE BLOCK T24708 HOMO VALVE 2 1/8" Micro Gap - 3 stages
 PISTON PACKING T19023 Ø 2 1/4" Back Pr. Valve 2 1/8" Piloted - HVA
 CAPACITY 12.000 l/h 3.170 GPH
 TEST: CAP: 11.885 l/h PRESS: 200 bar OIL 30 °C OIL 30 bar NOISE: 85,1 dB(A)
 PRESSURE 200 bar/ 2.900 PSJ Suction Connection: DN 65 DIN M851
 PRODUCT Milk Discharge Connection: DN 50 DIN M851
 TEMP 80 °C H-P Connection:

STANDARD ASSEMBLY LIST: SPECIALS:

Base (i= 5,35) T90471-89 exc.: Oil Splash Cover T30652
 Machine Feet T04308 / T04750
 L. O. P T98206-89
 Oil-lines T97360A89
 Water-lines T97376-88
 SKIN T97050D88
 Well lining T9753702
 Cyl. Block: T91637A88 exc.: ~~Back Pr. Valve Block with Pr. Sensor Connection~~
 Material: 1.4405
 Supplier: S&C
 Tools T96640-88

M.C. Home Valve 1.4301 T99305 988 A88 exc.: Inlet Flange with Pr. Sensor Connection T21529
 Back Pr. Valve T97998-88
 H. V. A-Piping T97208 Less.: Start-, Stop-Switch + Control Lamp
 Automatic Pr. Controller T98601-88 exc.: Double Pump T98906, - Motor T001269
 Homo. Lub. Oil T89501
 Manual T88802 + FAX + Pr. Controller
 Time Counter -----
 Pr. Sensor System 602625 (FAX 101), Pr. Sensor Adjusting Screw T17618
 Outline Dwg. 89489-1 Less.: Display 602615

Cyl. Block Assy Dwg. T97035-1
 M.C. Home Valve Assy Dwg. 87034-2
 Back Pr. Valve "C" 88426-3
 Wiring Diagram T.K. 88189-3, 90071-3 / Hydr. Diagram 85297-4A

Type: 3170MC30-3TPS Customer: FRYA
 Serial-No: 90L33489 Address :
 Order-No: M53965 /8901862 Country : Group:
 Direct: Agent : LANDTEKNIKK
 Weight: 4100 kg SO-No: 1624 Fitter : *Litche* SIC-No: 2026

MOTOR SPECIFICATION:

Mot-Art.No.: CUST.MOT. Ambient: 40 deg.C Speed : 1485 1/min
 Manufacture: Phase : 3 Test : 0 1/min
 Motor-Type : 280M Cycle : 50 Hz d x lg: 75 x 140
 Frame : Volts : 400 Prot-System.: IP 54
 Power : 90,0 kW Ampers : 0,0A Test: 0,0 A Mot-No:

Belt-Drive: 12000 1/h Type: TAPER LOCK
 Driving-No: T52226 Groove: SPB TL-Bushing: T52020 Bore: 75 kwy: 20 DIN
 Driven-No.: T52210 Groove: SPB TL-Bushing: T52042 Bore: 3" kwy: DIN
 Belts-No. : T02398 Quant : 5 Type: SPB 2900 Centers: 0

Safe.Valve: set to: 0 bar Splash-Cov: Support:
 PR.-Gauge : T18031 set to: 200 bar Manufacture:
 Inl.-Gauge: T18081
 Gauge-Block: T24775 Homo-Valve: 2-3/16" MICRO GAP - 3 STG
 Pl--Pkg: T19023 d=2-1/4" 1st Stg:
 2nd Stg:

Capacity: 12000 1/h = 3170 USph
 Test-Cap: *11815* 1/h Pressure: *200* bar Oil-Temp: *38* deg.C Pressure: *310* bar
 Noise: *85,7* db(A)
 Pressure: 200 bar = 2900 PSI Suct.-Connection: DN 65 FIN 11851
 Product: MILK Dish.-Connection: DN 50 DIN 11851
 Temperature: 80 deg.C High.Pr.-Connect:

STANDARD-ASSY.-LIST: SPECIALS:

Base : T90471-89 EXC.OIL SPLASH COVER T30652, MACHINE FEET T04308
 (i= 5,350)

Oil-Lines : T97360A89

L.O.P. : T98206-89

Water-Lines: T97376-88

Skin : T97050D88

Well-Lines : 753702

CYL.-Block : T91637A88 EXC.PR. GAUGE BL.WITH PR.SENS.CONNECT. T24775
 Material : 1.4405
 Assy-Dwg. : *87035-1*

Tools :

Homo-Valve : *905388A88* EXC.:
 Material : 1.4301
 Assy-Dwg. : *87034-2* BACK Pr. Valve T57998-88

HVA-Lines : T97209

Rec.-System:

Lubr.-Oil : T89501 Manual: T88802 +
 Outline-Dwg: - - - Wiring-Dia: - - -

REMARKS :

Teilleiste / Spare Parts List

Datum:		Ser. Nr. 90L33 489	Type: MC30-JTPS	zu Zyl. Block: T91637	
APV		APV Gaulin GmbH	Assy Nr. 817035-1		
Mecklenburger Straße 223, D-2400 LÜBECK 16		Teil-Nr.		Teil-Nr.	Stück
Postfach 100164 · Telefon (0451) 69301-0					
Telefax 26355 gaund · Telex (D451) 00 06 66					
10	Saugventil	Suction Valve	035	814	
20	Saugventil-Sitz	Suction Valve Seat	036	716	
30	Saugventil-Führung	Suction Valve Guide	007		
40	Druckventil	Discharge Valve	035	814	
50	Druckventil-Sitz	Discharge Valve Seat	036	716	
60	Druckventil-Führung	Discharge Valve Guide	007		
70	Druckventil-Feder	Discharge Valve Spring	T390	83	
80	Ventil-Anschlag	Valve Stop	023		
90	Frontdeckel-Schraube	Front Cap Stud	410	439	
100	Frontdeckel-Dichtung	Front Cap Gasket	802	600	3x
110	Kopfdeckel-Schraube	Upper Cap Stud	40	304	
120	Kopfdeckel-Dichtung	Upper Cap Gasket	802	610	3x
130	Kolben ϕ 2 1/4"	Pfänger ϕ 2 1/4"	122	419	
140	Kolbenring	Pfänger Ring	T199	124	
150	Packungsring	Packing Adj. Ring	T198	74	
160	Kolbenpackung Stck/Kolb	Pfänger Packing pcs/Plg	3	T19023	3x
170	Packungsfeder	Packing Spring	689	842	
180	Hochdruck-Manometer I/II	Homo Pressure Gauge I/II	T180	31	T18029
190	Manometer-Dichtung	Pr. Gauge Gasket	802646		2x
200	Manom.-Block-Dichtung	Gauge Block Gasket	802646		1x
210	Einlaß-Manometer	Inlet Gauge	T18029		
220	Einlaß-Mano-Dichtung	Inlet Gauge Gasket	802646		1x
230	Einlaß-Flansch-Dichtung	Inlet Conn. Gasket	802	664	4x
240	Einlaß-Dichtung	Inlet Gasket	T861	19	
250	Auslaß-Dichtung	Outlet Gasket	T861	03	
260	Stopfbuchse	Packing Adj. Screw	304	701	
270	Stopfbuchsen-Ring	Baffle Wiper Ring	415	807	6x
280	Stopfbuchsen-Packung	Baffle Seal Packing	811	238	6x
290	Ventil	Valve	3x	899 666	
300	Ventil Stopfen	Valve Plug	899	836	
310	V-Stopfen O-Ring	Valve Plug O-Ring	801	588	1x
320	Ventil Feder	Valve Spring	899	687	
330	Einlaß, O-Ring	Inlet O-Ring		T84053	1x
340	Ausl.Fl. O-Ring	Disch. Flange O-Ring	T840	54	1x
350	Grundvent. O-Ring	Base Valve O-Ring	801	758	1x
360	Einl.F. O-Ring	Inlet Flange O-Ring	801	530	1x
	Einl.Fl. Stützring	Inlet Backup Ring	801	759	1x
370	Rückdr. Ventil Sitz	B.Pr. Seat	124	416	
	Rückdr. Ventil Stift	B.Pr. Valve	T22629		
380	Ventil Spindel	Valve Rod	130	530	
390	V, Spindel Dichtung	Valve Rod Gasket	801	576	1x
	RdV. Sitz Dichtung	B.Pr. Seat Gasket	802	683	1x
400	LOP-Öldruckschalter	LOP Switch	T529	11	
410	Öl-Kühler	Oil Cooler	T50100	234207	
420	Öl-Filter Patrone	Oil Filter Cartridge	T52404		
430	Öl-Druck-Manometer	Lub. Oil Pressure Gauge	T18053		
440	Keilriemen	Vee Belt	T023	98	
450	HVA Motor + Pumpe	HVA Motor + Pump Assy	T989	06	
460	HVA-Vordruckmanometer	HVA System Gauge	T18070	T18070	
470	HVA-Manometer St. I/II	HVA Stg. Gauge I/II	T18062	T18062	
480	HVA-Überdruckventil	HVA Syst. Relief Valve	T88014	T88014	
490	HVA-Reduzierventil I/II	HVA Reducing Valve	905423	905423	
500	HVA-Kolbendichtung I/II	HVA Actuator Packg. I/II	801	768	1x
	HVA Kolben Stützring	HVA Act. Back UP Ring	801	769	1x
	MG.V. Spindle O-Ring	MG. Act. Rod O-Ring	801	587	1x

MACHINE-DATA

Machine-Type: 3170 MC 30 - 3 TPS
 Serial-No.: 90L33489
 Order-No.: M 53965 / 8901862

Product-Operating Data:

Pump Capacity: 12 000 l/h = 3 170 USGPH
 Max. Operating Pressure: 200 bar = 2 900 PSI
 Max. Operating Temp.: 80 C°

Base:

Material: Meehanite
 Design: Standard Compact Design ~~Low-Silhouette~~
 - Cladding: - Stainless Steel ~~- Vee-belt Guard~~
 - Painting: - ~~- Colour: /~~
 Gear Transmission: i = 5,35

Belt Drive:

Transmission: i = 1,59
 Driving-, Driven Sheave: d = 315 D = 500 mm
 Belt Part-No., Quantity: T 02398 5 Piece

Cylinder Block:

Material: 87 035-1
 Cr-Ni-Mo-Steel
 Quantity of Plunger: 3 Piece
 Plunger Diameter: 57,2 mm = 2-1/4 inch
 Quantity of Packings per Plunger front/rear: 3 Piece, Part-No.: T19023 / -

Connections:

Inlet Connection: DN 65 DIN 11851
 Outlet Connection: DN 50 DIN 11851
 Cooling Water Connection: R 1/2" i
 Steam etc.: /

Homogenizing Valve:

Type ~~Dyna-Jet~~/Micro Gap 87 034-2/ 88 426-3 "C"
 Material: Cr-Ni-Mo-Steel
 Quantity of Stages: 3 Gaps
 Valve Dimension: 2-3/16"
 Valve Design: / Page / Plate: /
 Valve Actuating: HVA/ HVA

Express Service**APV GAULIN Service-Department**

☎ (D-Code) 451 · 69301 · 49

MACHINE-DATA

(Continuous)

Machine-Type: 3170 MC 30 - 3 TPS
Serial-No.: 90L33489
Order-No.: M 53965 / 8901862

Electrical Data:

Main Motor: Customer Motor

- Power, - Speed: 90 kW, 1 485 min⁻¹
- Voltage, - Frequency: 400 V, 50 Hz
- Protection, - Frame: IP 54 , 280 M
- Type, - Rated Current: B3 , 173 A

Lubricating Oil Pump Motor:

- Power, - Speed: 0,37 kW, 1 350 min⁻¹
- Type, - Rated Current: B3/B5 , 1,22 A

HVA-Pump Motor:

- Power, - Speed: 0,18 kW, 1 350 min⁻¹
- Type, - Rated Current: B5 , 0,56 A

Specials:

..... Inlet Pressure Gauge
..... Well Lining
..... Dampener Pads
..... Automatic Pressure Controller
..... Pressure Sensor System
.....
.....
.....

Machine Dimensions:

Refer to Outline: 89 489-1

Machine Weight:

..... 4 100 kg

Testdata:*

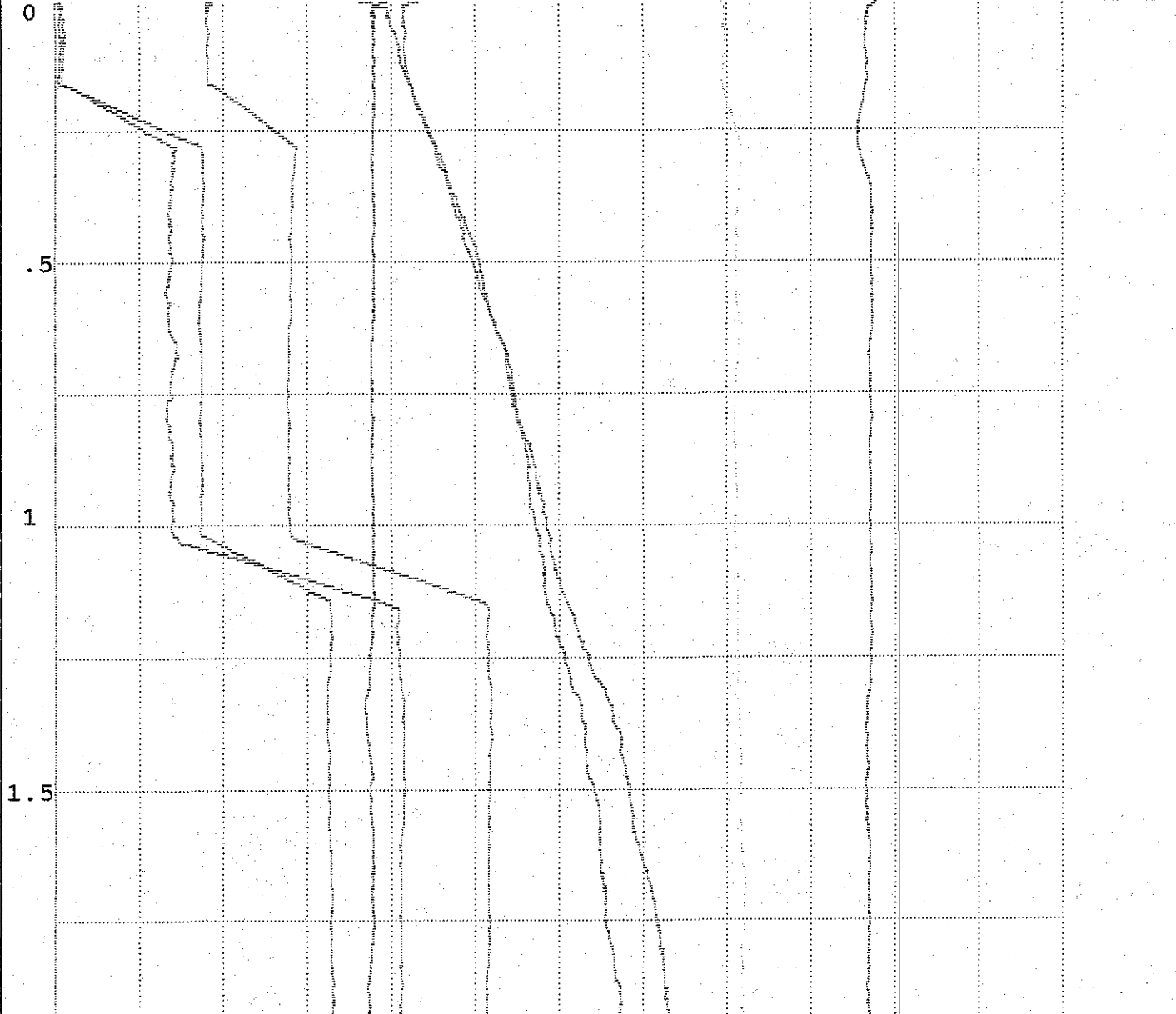
Operating Pressure - Total pressure: 200 bar
Operating Pressure (2nd stage): 50 bar
HVA-Oil Pressure (1st stage): 45 bar
HVA-Oil Pressure (2nd stage): 40 bar
Test-Motor-ampere draw: 152,4 A
Motor Speed: 1 480 min⁻¹
Pump Capacity: 11 885 l/h
Lub. Oil Pressure: 3,0 bar
Lub. Oil Temperature: 38 °C
Noise Level: 85,1 dB (A)

* Refer to Annex

25.1.90
N. S.

Maschinen Typ : 3170MC30-3TPS Nenndr. [bar/PSI] : 200 / 2900
 Seriennummer : 90L33489 Test Datum : 23.01.1990
 Nennkap. [l/h] : 12000 QA -Inspektor : U.Babendererde
 Leistung [kW/A] : 90/173 Übersetzung [i] : 5.35

0	40	80	120	160	bar
0	150	300	450	600	bar
0	90	180	270	360	A
0	8750	7500	11250	15000	l/h
0	750	1500	2250	3000	U/min
0	18	30	45	60	°C
0	18	30	45	60	°C
0	30	50	90	120	dB A



Endwerte / Final Data

2	Durchfluß	11884.9 l/h	Capacity Flow
	Producktdruck	216.7 bar	Operat. Pressure
(Std)	HVA Druck	44.9 bar	Hydraulic Press I
	Getriebetemp.	37.5 °C	Lub.-Oil Temp.
	Motortemp.	35.2 °C	Motor Temp.
	Stromaufnahme	152.4 A	Full Load Amp.
	dB Messung	81.9 dB A	Noise Level
	Upm	916.7 U/min	Drive shaft speed
	Kurbelw. Upm	171.3 U/min	Exc. speed

U. Babendererde
 Unterschrift/Signature

Maschinen-Prüfstand-Bericht

Ausstell Datum 22.9.89



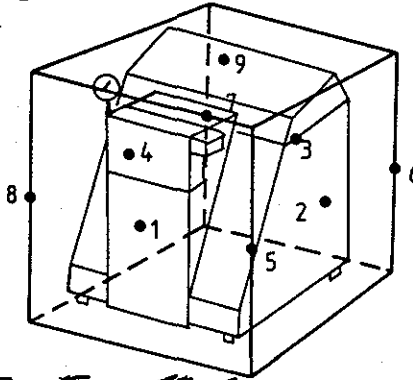
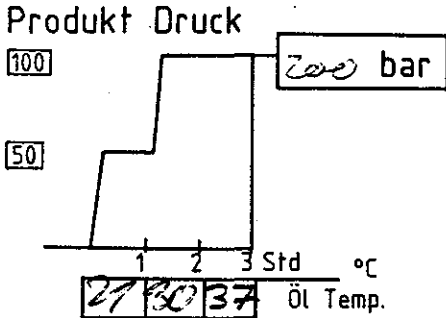
APV Gaulin GmbH
 Mecklenburger Straße 223, D-2400 LÜBECK 16
 Postfach 160 164 · Telefon (04 51) 693 01-0
 Telex 26355 gaulin d · Telefax (04 51) 69 08 66

Abnahme Datum 23.1.90
 Abnahme Inspektor *Ref. J.*

TYPE 3170 HC 30 - 7 TPS SERIE-NR 90L33489
 LEISTUNG 12.000 l/h MAX.DRUCK 200 bar

Öldruck: Start 30
 Ende 3,0

Leistung nach Durchflußanzeige 12000 l/h Soll 12.000 l/h



1	87	vorn
2	90	r.Seite
3	87	hinten
4	87	l.Seite
5	88	rvorn
6	86	rhinten
7	88	l.hinten
8	86	l.vorn
9	89	oben
Σ/9	87,6	
	-2,5	dB A
	85,1	dB A

Berichtigungsfaktor

HVA Öldruck bei Vollast		<i>Fax 10-1</i>					
1.Stufe	50 bar	2.Stufe	40 bar				
Sicherheitsventil eingestellt auf — bar							
Manometer Nr.	V5770	Rote Marke bei	200 bar				
Kundenmotor	90 kW	Bauform	33	Typ	2804	Schutzart	IP52
Drehzahl	1500 Upm	1500 V	50 Hz	Schaltung			
Hersteller		Besonderheiten					
Amp. bei Vollast-Test	— A	Nennstrom	— A	Motor-Nr.			
Trieb,Antriebsscheibe φ	500 mm	Motorscheibe φ	315 mm	Achsabstand	870 mm		
Keilriemen-Bezeichnung	2500 SPB	Antriebswelle	925 Upm	Motorwelle	1400 Upm		
Testmotor	90 kW	1500 Upm	12.000 l/h	rechnerisch			
Amp. bei Vollast+Test	150 A	Nennstrom	173 A	ok	ja	Bemerkungen	

Regelung geteilt

1. Beschaffenheit d. Getriebes-Laufbild-Zahnoberfläche	<input checked="" type="checkbox"/>	
2. Spiel der Kreuzkopflagerung	<input checked="" type="checkbox"/>	
3. Sitz d. Lagerschrauben u. Gleitschuhdeckel	<input checked="" type="checkbox"/>	
4. Lauf "lose" d. Rollen u. Gleitlager	<input checked="" type="checkbox"/>	
5. Dichtheit d. Wasser- u. Ölleitungen	<input checked="" type="checkbox"/>	
6. Zylinder-Atmung (normal 0,01-0,015 mm)	<input checked="" type="checkbox"/>	
7. Austauschbarkeit der Zylinderdeckel	<input checked="" type="checkbox"/>	
8. Beschaffenheit d. Pumpenventile,Sitze,Führungen,Federn	<input checked="" type="checkbox"/>	
9. Beschaffenheit d. Kolben,Ringe,Packungen,Federn	<input checked="" type="checkbox"/>	
10. Beschaffenheit d. Zylinder,Deckel Oberflächen (blank poliert)	<input checked="" type="checkbox"/>	
11. Manometerschwingungen (Produkt u. Öl)	<input checked="" type="checkbox"/>	
12. Staudruck während d. Laufes (kl. 15 bar)	<input checked="" type="checkbox"/>	
13. Gängigkeit d. Homo-Ventilteile u. Beschaffenheit	<input checked="" type="checkbox"/>	
14. Funktion d. Öldruckschalters (1,0 bar)	<input checked="" type="checkbox"/>	
15. Motorerwärmung	<input checked="" type="checkbox"/>	
16. Keilriemenerwärmung	<input checked="" type="checkbox"/>	
17. Allgemeiner Zustand d. Maschine / Verkleidung	<input checked="" type="checkbox"/>	
18. Konservierung d. blanken Maschinenteile	<input checked="" type="checkbox"/>	
19. Kompletter Werkzeugsatz mitgeliefert	<input checked="" type="checkbox"/>	
20. Anschlußkupplungen mitgeliefert	<input checked="" type="checkbox"/>	
21. Ölfüllungen mitgeliefert	<input checked="" type="checkbox"/>	
22. Reservedichtungen mitgeliefert	<input checked="" type="checkbox"/>	
23. Hinweisschilder angebracht	<input checked="" type="checkbox"/>	
24. Handbuch mitgeliefert	<input checked="" type="checkbox"/>	
25. Packungsliste mitgeliefert	<input checked="" type="checkbox"/>	

Ref. J. 23.1.90
 Unterschrift Datum

EXTRAS

AUSSTELLUNG Nr. 22.9.89 N. 84.

Pos.	Bezeichnung	Zus. Zeit
1	E-Motor: Kundenmotor Einbau hier	/
2	2 3/16" Micro Gap Ventil 3-stufig	6,0
3	2 3/16" Piloted Rückschlagventil - HVA	/
4	Speisendruck - Manometer	/
5	Kolbenwannenabdeckung	2,-
6	Dämpferkürze	/
7	Regelung	1,0
8	Druckaufnehmer system	1,0
9		
10		
11		
12		

Maschinentyp	MC30-3TPS	Summe	10,-
		Zeit Montage+Test	49,0
		Gesamtvorgabe Zeit	59,00

M53965

ORDER : 8901862
 NAME : Frya / Landtechnik - AGI
 TYPE : 3170 MC30-3TPS
 S/N : 90L33489


TOOLS CHECK :
 SHOP ORDER :
 MONT. :
 MATERIAL : Stal.
 DELY : 4/90
 RES. : sofort
 PACKING : Ja

XX
 25.01.90
 CW

am 22.09.89 zu UM

CYL.BLOCK :
 SUPPLIER :
 IDENT NO :
 SHOP ORDER NO :

Teilliste / Spare Parts List

Datum: 30.05.90		Ser. Nr. 90L33489		Type: MC30-3TPS		zu Zyl. Block T91637 Assy Nr. 87035-1	
 APV Mecklenburger Straße 223, D-2400 LÜBECK 16 Postfach 180164 · Telefon 04 5116 93 01-0 Telex 24356 gauin d · Telefax 04 511 69 06 05				Teil-Nr.	Teil-Nr.	Stck.	
10	Saugventil	Suction Valve		035 814			
20	Saugventil-Sitz	Suction Valve Seat		036 716			
30	Saugventil-Führung	Suction Valve Guide					
40	Druckventil	Discharge Valve		035 814			
50	Druckventil-Sitz	Discharge Valve Seat		036 716			
60	Druckventil-Führung	Discharge Valve Guide					
70	Druckventil-Feder	Discharge Valve Spring		T390 83			
80	Ventil-Anschlag	Valve Stop					
90	Frontdeckel-Schraube	Front Cap Stud		410 439			
100	Frontdeckel-Dichtung	Front Cap Gasket		802 600			3x
110	Kopfdeckel-Schraube	Upper Cap Stud		410304			
120	Kopfdeckel-Dichtung	Upper Cap Gasket		802 610			3x
130	Kolben ø 2-1/4"	Plunger ø 2-1/4"		122419			
140	Kolbenring	Plunger Ring		T199124			
150	Packungsring	Packing Adj. Ring		T19874			
160	Kolbenpackung Stck/Kolb	Plunger Packing pcs/Plg	3	T19023			9x
170	Packungsfeder	Packing Spring		689842			
180	Hochdruck-Manometer I/II	Homo Pressure Gauge I/II		T18031	T18029		
190	Manometer-Dichtung	Pr. Gauge Gasket		802646			2x
200	Manom-Block-Dichtung	Gauge Block Gasket					1x
210	Einlaß-Manometer	Inlet Gauge		T18081			
220	Einlaß-Mano-Dichtung	Inlet Gauge Gasket					1x
230	Einlaß-Flansch-Dichtung	Inlet Conn. Gasket		802 664			
240	Einlaß-Dichtung	Inlet Gasket		T85193			
250	Auslaß-Dichtung	Outlet Gasket		T85103			
260	Stopfbuchse	Packing Adj. Screw		304701			
270	Stopfbuchsen-Ring	Baffle Wiper Ring		415803			6x
280	Stopfbuchsen-Packung	Baffle Seal Packing		811238			6x
	Grundventil	Base Valve		899667			
290	Ventil	Valve	3x	899666			
300	Ventil Stopfen	Valve Plug		899836			
310	V. Stopfen O-Ring	Valve Plug O-Ring		801588			1x
320	Ventil Feder	Valve Spring		899687			
330	Einlaß, O-Ring	Inlet O-Ring		T84053			1x
340	Ausl. Fl. O-Ring	Disch. Flange O-Ring		T84054			1x
350	Grundvent. O-Ring	Base Valve O-Ring		801758			1x
360	Einl. Fl. O-Ring	Inlet Flange O-Ring		801530			1x
	Einl. Fl. Stützring	Inlet Fl. Backup Ring		801759			1x
370	Rückdr. Ventil Sitz	B.Pr. Seat		124416			
	Rückdr. Ventil Stifte	B.Pr. Valve		T22629			
380	Ventil Spindel	Valve Rod		130530			
390	V. Spindel Dichtung	Valve Rod Gasket		801576			1x
	Rd.V. Sitz Dichtung	B.Pr. Seat Gasket		802683			1x
400	LOP-Oldruckschalter	LOP Switch		T52911			
410	Öl-Kühler	Oil Cooler		234302			
420	Öl-Filter Patrone	Oil Filter Cartridge		T52404			
430	Öl-Druck-Manometer	Lub. Oil Pressure Gauge		T18053			
440	Keilriemen	Vee Belt		T02398			
450	HVA Motor + Pumpe	HVA Motor + Pump Assy		T98906			
460	HVA-Vordruckmanometer	HVA System Gauge		T18070	T18070		
470	HVA-Manometer St. I/II	HVA Stg. Gauge I/II		T18062	T18062		
480	HVA-Überdruckventil	HVA Syst. Relief Valve		T88014	T88014		
490	HVA-Reduzierventil I/II	HVA Reducing Valve		905429	905429		
500	HVA-Kolbendichtung I/II	HVA Actuator Packg. I/II		801768			
	HVA Kolben Stützring	HVA Act. Back UP Ring		801769			1x
	MG. V. Spindel O-Ring	MG. Act. Rod O-Ring		801567			1x

APV